

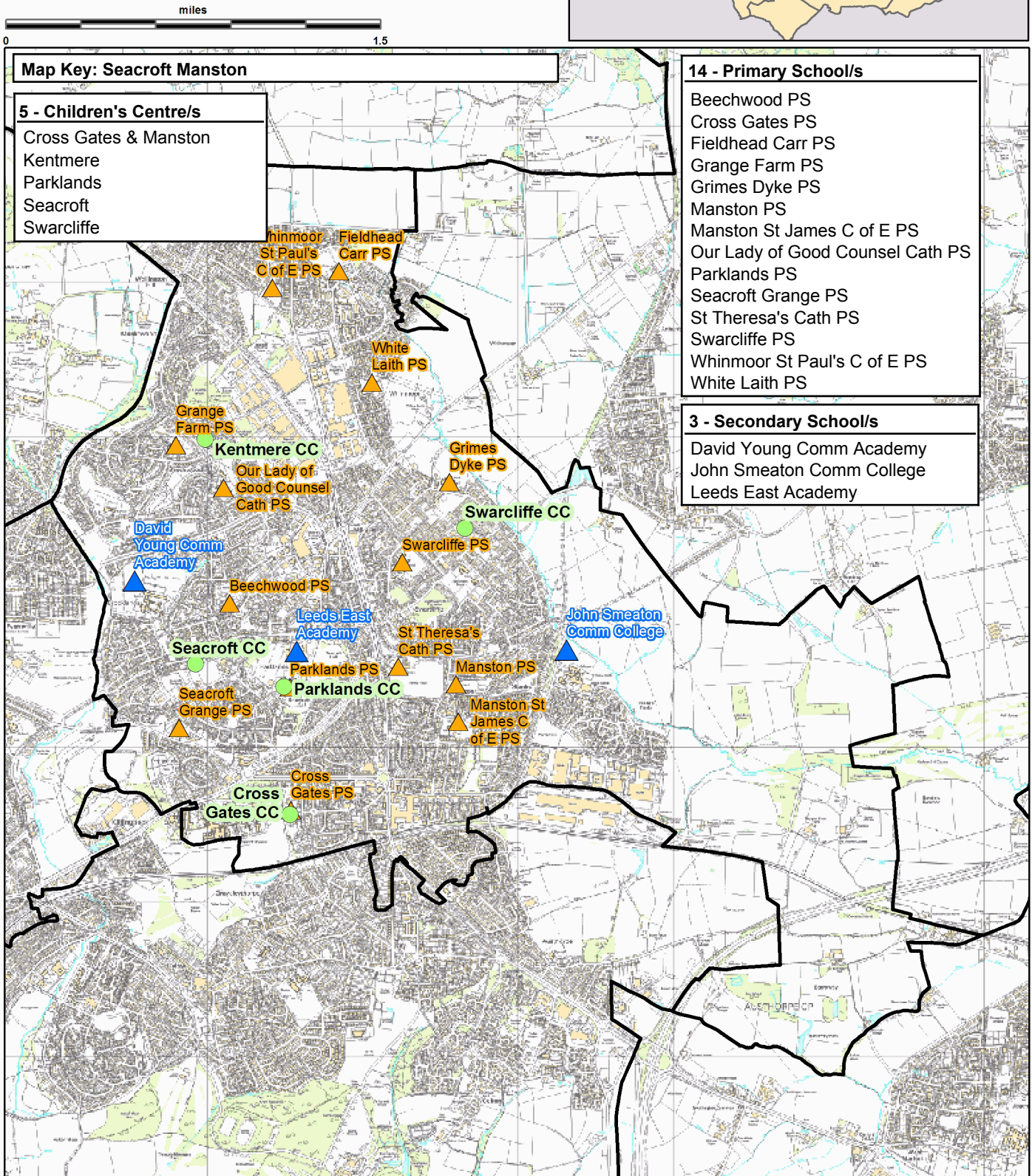
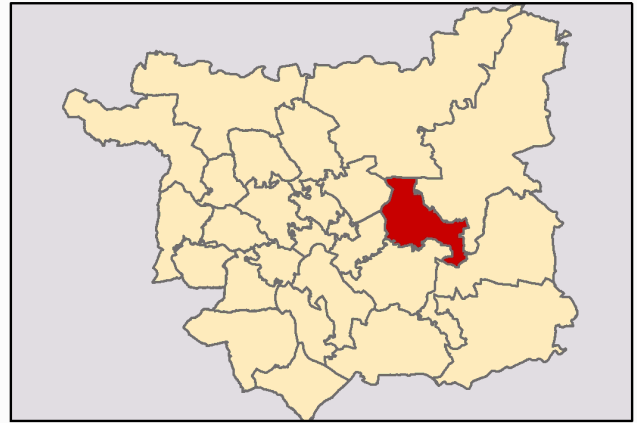
Seacroft Manston

This report was produced by the Children's Performance Service on 01/06/2012. The information in these overviews are based on the cluster data profile version 5.12.

For more information telephone 0113 39 50701 or email educ.pmi@leeds.gov.uk or visit:

www.leedsinitiative.org/ClusterDataProfile.aspx

The map to the right gives the position of the cluster in Leeds. The map below shows the location of the Children's Centres, Primary and Secondary Schools in the cluster.



Cluster Overviews key**Data Period:**

The codes in the key to the right are for the time periods that the data in these reports cover. They will appear next to all data sets.

Academic Year
Calendar Year
Financial Year
Snapshot
Other

DP:A
DP:C
DP:F
DP:S
DP:O

Cluster Overview

Data Source: January School Census					Data Source: January School Census						
					DP: S						
Primary Schools		DFE	Total Number on roll			Secondary Schools		DFE	Total Number on roll		
			2010	2011	2012				2010	2011	2012
Beechwood Primary School		2444	387	409	411	E-ACT Leeds East Academy		4000			579
Cross Gates Primary School		2458	210	201	227	John Smeaton Community College		4045	921	953	974
Fieldhead Carr Primary School		2469	229	236	218	* Parklands Girls' High School		4059	667	613	
Grange Farm Primary School		2447	381	407	413	David Young Community Academy		6905	1002	1002	1004
Grimes Dyke Primary School		2448	247	240	230	* = closed school		Total	2590	2568	2557
Manston Primary School		2464	177	170	181						
Manston St. James C of E Primary School		3910	386	395	400						
Our Lady of Good Counsel Catholic PS		3376	235	226	231						
Parklands County Primary School		2467	253	239	244						
Seacroft Grange Primary School		2452	218	209	222						
* St Gregory's Catholic PS		3384									
St Theresa's Catholic PS		3385	512	507	509						
Swarcliffe Primary School		2468	225	234	257						
Whinmoor St Paul's C of E Primary School		3912	206	202	200						
White Laith Primary School		2456	200	191	192						
* = closed school											
Total			3866	3866	3935						

Data Source: Children's Services - Feb 2012		DP: S
Children's Centre reach area registration for families of children aged 0-5		% Registered
Cluster		60.70
Wedge		59.28
Leeds all		60.23

Data Source: Children's Services	
Children's Centre	Ofsted ID
Cross Gates & Manston	
Kentmere	512412
Parklands	512425
Seacroft	512400
Swarcliffe	512403

Data Source: The office of National Statistics population mid-year estimates									DP: S
Population Estimates	0-15			Working Age			60/65+		
	2008	2009	2010	2008	2009	2010	2008	2009	2010
Cluster	8400	8270	8245	26335	26355	26398	7952	7996	8094
Wedge	40736	40931	41233	132341	133770	135300	37146	37313	37640
Leeds all	132741	133396	134493	516578	522769	531036	129937	131536	133240

Data Source: NHS Leeds												DP: S
Under Fives	September 2010						September 2011					
	0-1	1-2	2-3	3-4	4-5	Total	0-1	1-2	2-3	3-4	4-5	Total
Cluster	630	565	567	555	544	2861	552	632	580	568	543	2875
Wedge	3177	3061	3042	2929	2892	15101	3041	3163	3021	2987	2942	15154
Leeds all	10202	9848	9478	9195	9113	47836	9996	10173	9787	9438	9319	48713

Data Source: January School Census												DP: S
Percentage of pupils who are:	Black and Minority Ethnic			English as an Additional Language			Free School Meal Eligible			Special Education Needs		
	2010	2011	2012	2010	2011	2012	2010	2011	2012	2010	2011	2012
Primary												
Cluster school	8.5	9.6	12.8	3.2	4.0	4.4	34.6	34.1	33.7	24.0	23.2	20.7
Cluster residence	9.1	9.7	12.3	3.8	4.2	4.6	33.9	33.3	32.3	23.7	23.1	20.5
Wedge school	41.6	42.9	44.0	27.2	28.2	28.9	25.0	25.2	24.7	19.5	19.9	18.5
Total primary	23.6	24.8	26.4	15.8	16.5	17.1	21.5	22.2	22.0	17.8	17.8	17.4
Secondary												
Cluster school	18.6	18.7	17.4	13.2	13.1	12.8	39.1	39.6	38.8	24.6	28.4	25.1
Cluster residence	8.6	8.0	8.5	3.7	3.4	4.2	27.5	27.4	27.9	27.0	29.0	24.9
Wedge school	37.5	39.2	41.1	19.5	17.3	19.8	23.2	23.9	24.2	23.9	25.6	22.1
Total secondary	18.6	19.4	20.4	10.4	10.0	11.1	19.0	19.4	19.5	21.4	20.4	19.0
Leeds all	21.4	22.5	23.9	13.4	13.7	14.6	20.6	21.1	21.1	20.0	19.6	18.7

Data Source: HM Revenue and Customs - taken on 31st August 2007-2009										DP: S
Child Poverty	Number of children (under 16) in families in receipt of CTC or IS/JSA			Number of children (all ages) in families in receipt of CTC or IS/JSA			Number of children in poverty, by age of youngest child, 2009			
	2007	2008	2009	2007	2008	2009	0-4	5-10	11-15	16-19
Cluster	2615	2625	2840	2890	2890	3165	1725	830	485	125
Wedge	11340	10850	10970	12700	12220	12500	6540	3560	1850	550
Leeds all	30235	29700	31030	33690	33300	34965	18720	9640	5115	1490

Data Source: Children's Services - Summer Term 2011					DP: S	
Nursery Education Grant Claims	Number of eligible children	Number of: Claims by childcare setting			Resident Claims	Non Resident Claims
Cluster	877			770	624	146
Leeds all	14500			13851	9704	4148

Data Source: January School Census and 2010 Index of Multiple Deprivation										DP: S
IMD % of pupils resident in most deprived areas	3% most deprived			10% most deprived			20% most deprived			
	10	11	12	10	11	12	10	11	12	
Primary										
Cluster school	16.1	17.9	18.5	44.3	44.7	44.9	69.9	69.4	70.6	
Cluster residence	16.8	19.0	18.7	45.8	45.7	45.1	73.3	72.7	73.2	
Wedge school	16.7	15.3	15.5	44.8	43.2	43.4	53.3	53.2	53.8	
Total primary	8.2	8.4	8.3	28.1	27.1	27.3	36.6	37.6	38.0	
Secondary										
Cluster school	26.2	27.9	26.6	66.7	63.2	62.0	86.2	84.1	83.0	
Cluster residence	14.6	17.4	17.6	41.8	42.0	43.1	69.5	69.6	69.3	
Wedge school	14.2	13.8	14.4	39.1	38.8	39.4	49.4	49.9	50.4	
Total secondary	7.0	7.5	7.6	24.0	23.5	23.8	32.3	33.5	33.6	
Leeds all	7.7	8.0	8.0	26.4	25.7	25.9	34.8	35.9	36.2	

Data Source: January School Census and CACI ACORN											DP: S
KEY: Wealthier Achievers(WA), Urban Prosperity (UP), Comfortably Off (CO), Moderate Means (MM), Hard Pressed (HP)											
Percentage of pupils in each ACORN category	2011					2012					
	WA	UP	CO	MM	HP	WA	UP	CO	MM	HP	
Primary											
Cluster school	3.0	0.9	20.8	11.4	63.0	2.9	0.8	19.6	11.9	63.9	
Cluster residence	3.5	0.7	18.4	11.6	65.8	3.6	0.6	17.8	11.9	66.1	
Wedge school	19.9	9.4	19.5	16.8	33.6	19.4	9.2	19.7	16.7	34.1	
Total primary	15.4	5.9	27.8	15.8	34.3	15.0	6.0	27.7	15.9	34.6	
Secondary											
Cluster school	1.1	2.8	9.4	14.3	70.9	1.2	2.5	10.2	13.5	71.1	
Cluster residence	5.1	0.3	20.1	11.7	62.7	5.0	0.4	20.1	11.3	63.2	
Wedge school	19.0	8.5	21.3	16.2	34.2	18.7	8.8	21.2	16.0	34.7	
Total secondary	17.1	5.2	29.7	14.7	32.5	16.9	5.3	29.8	14.7	32.6	
Leeds all	16.1	5.6	28.5	15.4	33.6	15.8	5.7	28.5	15.4	33.8	

Data Source: DWP information Directorate													DP: F
KEY: Job Seekers Allowance (JSA), Incapacity Benefit (IB), Lone Parent Benefit (LPB), Total Out of Work (TOW)													
Unemployment Percentage of working age people in receipt of:	2009				2010				2011				
	JSA	IB	LPB	TOW	JSA	IB	LPB	TOW	JSA	IB	LPB	TOW	
Cluster	6.5	9.2	3.5	19.7	6.0	9.4	3.1	19.2	6.2	9.4	2.9	19.1	
Wedge	5.2	6.8	2.5	15.0	5.2	6.8	2.2	14.8	5.2	6.8	2.0	14.6	
Leeds all	4.4	5.9	1.8	12.6	4.3	5.8	1.7	12.3	4.2	5.8	1.5	12.1	

Data Source: AXCIOM Lifestyle Survey 2009-2011													DP: S														
Property type by %	Owned									Rented - Council									Rented - Private								
	Less than 1 year			2-5 years			More than 5 years			Less than 1 year			2-5 years			More than 5 years			Less than 1 year			2-5 years			More than 5 years		
	09	10	11	09	10	11	09	10	11	09	10	11	09	10	11	09	10	11	09	10	11	09	10	11	09	10	11
Cluster	48.8	49.5	83.0	41.0	40.3	24.1	10.2	10.1	0.0	5.3	4.1	3.7	16.7	19.0	15.7	78.1	76.8	80.6	5.8	7.1	4.4	19.0	18.0	17.6	75.2	74.9	78.1
Wedge	58.9	59.1	44.4	25.7	25.8	58.7	15.4	15.2	0.0	5.8	7.1	4.4	19.0	18.0	17.6	75.2	74.9	78.1	5.8	7.1	4.4	19.0	18.0	17.6	75.2	74.9	78.1
Leeds all	61.5	61.6	39.0	24.0	23.9	61.2	14.5	14.6	0.0	7.9	8.1	5.1	20.3	20.0	18.5	71.9	71.9	76.4	7.9	8.1	5.1	20.3	20.0	18.5	71.9	71.9	76.4
Income by %	<10k			10-20k			20-30k			30-40k			40-50k			50k+											
	09	10	11	09	10	11	09	10	11	09	10	11	09	10	11	09	10	11									
Cluster	22	24	20	22	19	24	16	14	15	17	22	18	16	8	14	8	13	8									
Wedge	19	20	17	21	20	25	15	13	15	15	17	17	16	15	13	15	15	13									
Leeds all	20	18	18	21	20	23	16	15	16	15	18	17	14	13	13	14	16	14									
Struggling with payments by %	Food									Bills									Mortgage								
	09			10			11			09			10			11			09			10			11		
Cluster	18.6			13.9			6.9			18.1			15.4			9.8			2.7			2.6			1.0		
Wedge	15.1			11.7			6.6			17.8			15.0			9.2			2.3			2.0			1.6		
Leeds all	15.9			10.8			6.4			16.3			13.0			8.3			2.2			2.2			1.7		

Being Healthy

Data Source: NHS Leeds													DP: Various - Listed with each report			
Birth Data DP: C	3 year rolling average of births below 2.5kg % low birth weight babies						Number and rate of conceptions per 1000 15-17 year olds									
	2006-08		2007-09		2008-10		June to May		2008-09		2009-10		2008-09		2009-10	
Cluster	8.1		7.6		7.4		Cluster		113		99		61		55	
Wedge	8.8		8.6		8.5		Wedge		368		331		44		40	
Leeds all	7.8		7.8		7.6		Leeds all		1220		1145		45		43	
DP: C	% of women receiving a health and social care needs assessment at 12 weeks as a percentage of live births in the same year						DP: F	% Initiating breastfeeding April to March				% breastfeeding at 6 weeks April to March				
	2009		2010		2011			2009-10		2010-11		2009-10		2010-11		
Cluster	84.6		83.5		86.9		49.0		43.1		24.2		20.5			
Wedge	78.6		80.0		81.3		71.6		68.0		44.7		43.9			
Leeds all	81.6		82.9		84.0		67.6		65.1		40.4		39.3			
DP: C	Number of emergency admissions by age group 2007-11						Number of emergency admissions to hospital for injury, poisoning and certain other consequences of external causes by age group									
	0-4		5-10		11-18		0-4		5-10		11-18					
Cluster	1858		577		1316		223		186		505					
Wedge	9631		2721		5612		1033		791		2006					
Leeds all	29793		8247		18194		3419		2522		6711					
Immunisation Data DP: F	% of 2 year olds receiving vaccinations in quarter 3 for:						% of 5 year olds receiving vaccinations in quarter 3 for:									
	Diphtheria			MMR			Diphtheria			MMR						
Cluster	96	95	96	88	85	93	95	99	99	92	96	99				
Wedge	95	96	96	87	87	93	93	92	95	89	91	94				
Leeds all	96	96	97	86	88	94	95	94	96	91	91	95				

Data Source: National Child Measurement Programme													DP: A
Obesity	Obesity in Reception						Obesity in Year 6						
	% Obese			% Obese or overweight			% Obese			% Obese or overweight			
	08-09	09-10	10-11	08-09	09-10	10-11	08-09	09-10	10-11	08-09	09-10	10-11	
Cluster	11.5	12.0	11.4	22.9	26.0	25.8	21.0	21.3	20.1	35.1	36.8	34.7	
Wedge	9.7	10.4	10.1	21.4	23.3	23.2	20.3	22.1	20.5	33.9	36.6	35.2	
Leeds all	9.4	10.2	9.7	21.7	23.7	23.4	20.3	20.7	20.0	34.3	35.1	34.3	

Obesity	Obesity in Reception		Obesity in Year 6	
	3 year average 2008-2011		3 year average 2008-2011	
	% Obese	% Obese or overweight	% Obese	% Obese or overweight
Cluster	11.63	24.95	20.79	35.52
Wedge	10.07	22.68	20.89	35.18
Leeds all	9.77	22.96	20.32	34.56

Stay Safe

Data Source: Children's Services					DP: Various - Listed with each report							
Number of LAC and Child protection plans	The number of children and young people looked after by the Local Authority - March based on home address before coming into care					based on placement address			The number of children with child protection plans - March		DP: S	
	DP: S		2011	2012		2012			2011	2012		
	Cluster		90	98		104			47	51		
Wedge		0	474		315			0	246			
Leeds all		1439	1454		1454			947	1019			
Number of Common Assessments (CAFs)					Social Care			Social Care Referrals		Requests for Service		
DP: C	2008	2009	2010	2011	DP:A	2009	2010	2011	DP:S	Feb 11 - Jan 12		
Cluster	43	56	89	59	Cluster	970	1051	1115		2319		
Wedge	143	307	344	268	Wedge	3823	4170	4103		8634		
Leeds all	457	849	1115	892	Leeds all	14248	13784	14000		30539		
Number of Child and Adolescent Mental Health Services referrals												
DP: S	aged 11 and under				aged 12-18				total referrals			
September-October	2009-10		2010-11		2009-10		2010-11		2009-10		2010-11	
Cluster			124		83		239		116		363	
Wedge			471		250		686		429		1157	
Leeds all			1767		1124		2976		1730		4743	

Make a Positive Contribution

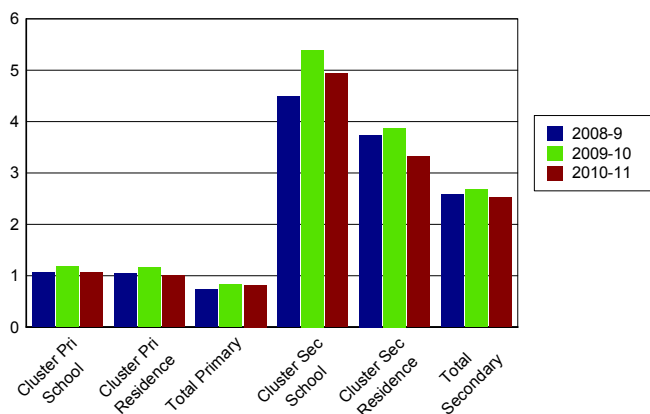
Data Source: West Yorkshire Police										DP: C
Property Crime Number of recorded crimes for:	Burglary dwelling		Burglary elsewhere		Criminal damage		Robbery		Vehicle crime	
	10	11	10	11	10	11	10	11	10	11
	Cluster	633	604	398	362	1092	807	41	28	345
Wedge	2789	2404	1062	1234	3572	2902	370	323	2368	1919
Leeds all	9508	8487	5681	5408	13599	10426	1297	1226	9168	7971
Personal Crime Number of recorded crimes for:					Drug Offences		Theft from person		Violent crime	
					10	11	10	11	10	11
	Cluster					47	179	55	43	594
Wedge					378	915	405	298	2375	2556
Leeds all					1248	3192	2235	3034	11233	10896
Domestic Violence Incidents	Number of incidents recorded with a domestic qualifier or disposition code on the Storm WYP incident recording system - 2011									
Cluster	1064									
Wedge	4116									
Leeds all	14525									

Data Source: Youth Offending Service										DP: A
Youth Offending	Number of Offenders					Number of Offences				
	07-08	08-09	09-10	10-11		07-08	08-09	09-10	10-11	
Cluster	215	153	113	115		446	336	189	188	
Wedge	780	515	405	439		1899	1454	901	883	
Leeds all	2741	2166	1522	1511		6331	4883	3134	3150	
April 2010 - March 2011 Number of offences by young offenders										
	Burglary	Breaches	Criminal Damage	Drugs Offences	Motoring and Vehicle	Other	Public Order	Theft and handling	Violence against the person	
Cluster	16	9	18	16	12	22	25	30	40	
Wedge	69	85	99	66	77	108	95	125	159	
Leeds all	291	270	328	204	218	358	282	612	587	

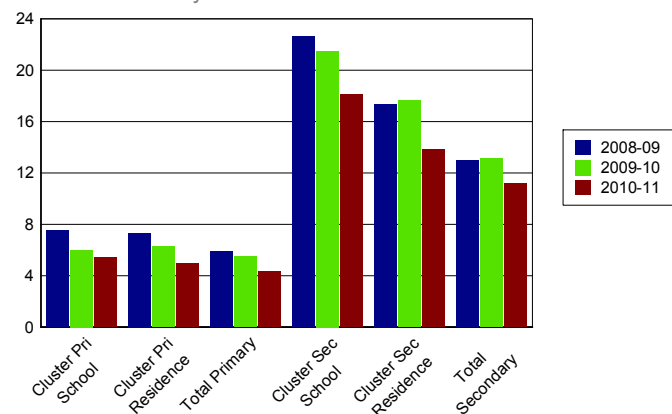
Data Source: School Census												DP: A
Attendance and persistent absence by percentage	Attendance			Authorised Absence			Unauthorised Absence			Persistent Absence 15%		
	08-09	09-10	10-11	08-09	09-10	10-11	08-09	09-10	10-11	08-09	09-10	10-11
Primary												
Cluster school	94	94	94	5	5	5	1.1	1.2	1.1	7.5	6.0	5.4
Cluster residence	94	94	94	5	5	5	1.1	1.2	1.0	7.3	6.3	5.0
Total primary	94	94	95	5	5	4	0.7	0.8	0.8	5.9	5.5	4.3
Secondary												
Cluster school	89	89	90	6	6	5	4.5	5.4	4.9	22.6	21.5	18.1
Cluster residence	90	90	91	7	6	5	3.7	3.9	3.3	17.4	17.6	13.8
Total secondary	92	92	92	6	6	5	2.6	2.7	2.5	13.0	13.1	11.2

% Unauthorised Absence

2008-2011

**% Persistent Absence**

by 15% measure 2008-2011



Data Source: Children's Services												DP: A
Exclusions	Fixed Term Exclusions						Permanent Exclusions					
	Number			Rate per thousand			Number			Rate per thousand		
Primary	08-09	09-10	10-11	08-09	09-10	10-11	08-09	09-10	10-11	08-09	09-10	10-11
Cluster school	56	58	39	14.5	15.0	10.1	2	1	0	0.5	0.3	0.0
Cluster residence	56	56	37	12.6	12.6	8.5	2	1	0	0.5	0.2	0.0
Total primary	467	371	455	7.7	6.0	7.3	2	2	2	0.0	0.0	0.0
Secondary												
Cluster school	100	178	59	38.4	68.7	23.0	15	14	12	5.8	5.4	4.7
Cluster residence	414	322	264	170.0	133.8	109.5	8	10	4	3.3	4.2	1.7
Total secondary	4350	4286	3806	93.6	93.1	83.2	52	57	44	1.1	1.2	1.0

Enjoy and Achieve

Data Source: Keypas and DFE performance tables

DP: A

Foundation Stage Profile Data The percentage of pupils achieving a good level of development (78+ points overall and 6+ points in all PSE and CCL strands)

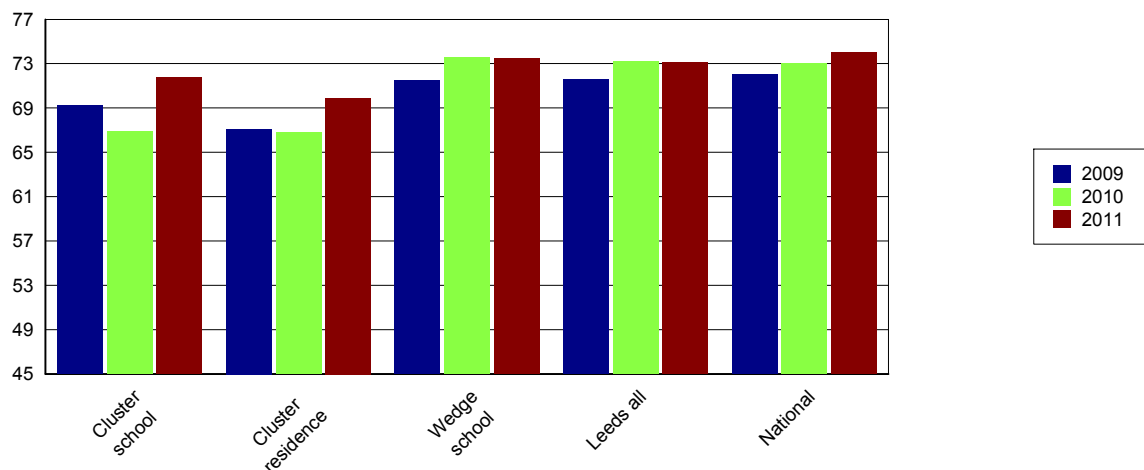
	2008	2009	2010	2011
Cluster school	45	46	49	57
Cluster residence	43	46	50	58
Leeds all	47	51	53	58

KS2 Data DP: A	English 4+			English 5+			Maths 4+			Maths 5+			English & Maths 4+		
	09	10	11	09	10	11	09	10	11	09	10	11	09	10	11
Cluster school	78	75	78	23	27	28	76	75	79	29	23	23	69	67	72
Cluster residence	76	74	77	24	25	27	74	75	77	29	22	21	67	67	70
Wedge school	78	78	80	31	31	30	78	79	78	35	32	33	71	74	74
Leeds all	79	79	81	28	31	32	77	79	78	33	31	32	72	73	73
National	80	80	82	29	33	29	79	79	80	35	34	35	72	73	74

KS2 Data - Expected progress	Made 2 levels of progress in English		Made 2 levels of progress in Maths	
	Number of pupils	Percentage	Number of pupils	Percentage
Cluster school	420	87.5	398	83.4
Wedge school	1865	90.5	1804	87.2
Leeds all	6334	88.6	6087	85.0
National		84.0		83.0

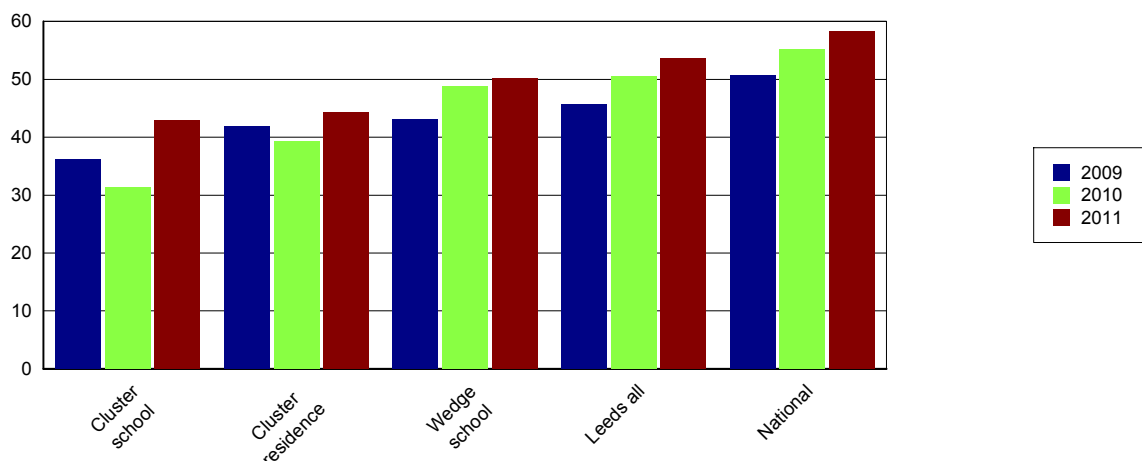
Percentage of English and Maths

Level 4+



Data Source: EPAS and DFE performance tables												DP: A		
The results are for GCSE & equivalent qualifications. The calculation of achieving no qualifications includes all qualifications														
KS4 Data	% of 5+ A*-C			% of 5+ A*-C inc Eng & Maths			% English Baccalaureate	% of 5+ A*-G			% achieving no qualifications			
	09	10	11	09	10	11		09	10	11	09	10	11	
Cluster school	65	78	85	36	31	43	1	87	94	95	3	2	2	
Cluster residence	66	77	85	42	39	44	6	90	94	95	4	2	1	
Wedge school	67	78	84	43	49	50	12	92	96	96	2	1	0	
Leeds all	67	76	82	46	51	54	13	91	94	94	2	2	1	
National	70	76	81	51	55	58	15	94	95	95	1	1	1	

Percentage 5 A*-C Including English and Maths



Achieve Economic Well Being

Key: Not in Employment, Education or Training (NEET), In Employment, Education or Training (EET), in Full time Education (FE)													
Data Source: November destination survey													DP: S
NEET/FE		Number of NEET			% NEET			Number of FE			% FE		
		2009	2010	2011	2009	2010	2011	2009	2010	2011	2009	2010	2011
Cluster school	Year 11	52	52	40	11	11	10	335	372	342	70	77	82
	Year 12	14	SUPP	17	7	SUPP	8	171	171	191	82	89	85
	Year 13	16	25	10	13	15	6	72	98	124	57	60	77
Cluster residence	Year 11	52	46	28	10	8	5	404	492	490	76	83	88
	Year 12	18	5	10	8	2	4	185	191	201	86	91	90
	Year 13	13	23	16	10	13	9	81	122	119	60	69	70
Leeds all	Year 11	646	393	357	8	5	5	6703	7194	6564	80	87	87
	Year 12	132	67	115	3	2	3	3436	3476	3550	90	93	93
	Year 13	121	135	120	5	4	4	2067	2350	2593	78	76	84

Data Source: Integrated Youth Support Service										DP: O	
16-18 NEET and EET Nov 2011 to Jan 2012	NEET		EET		Not Known		Other Activity				
	Number	%	Number	%	Number	%	Number	%			
Cluster	158	10.3	1356	88.6	SUPP	SUPP	SUPP	SUPP			
Wedge	493	7.5	6006	91.5	66	1.0	16	0.2			
Leeds all	1538	7.0	20170	91.7	343	1.6	58	0.3			

Please Note: Leeds totals for 16-18 NEET will not match publicised totals as published totals include a proportion of those whose status has expired